

For Lease

Mill Creek Town Center

Retail \$28.00 PSF + NNN

1,543 SF (Suite D) Available



15021 MAIN ST., SUITE D, MILL CREEK, WA 98012

Property Assets

- ✓ On the corner of 151st and Bothell-Everett Hwy
- ✓ Traffic Count 29,137 (source esri)
- ✓ Across Main Street from LA Fitness
- ✓ 2019 NNN Budget \$10.82
- ✓ Storefront Parking



Rodney Talley, Jr.
Sales & Leasing Broker

425-345-4431
Rodney@Key-CC.com
License Number 111936

Natalie Foskey, CPM, CCIM
Designated Broker

425-343-7176
Natalie@Key-CC.com
License Number 26699

Shivani Sterling
Sales & Leasing Broker

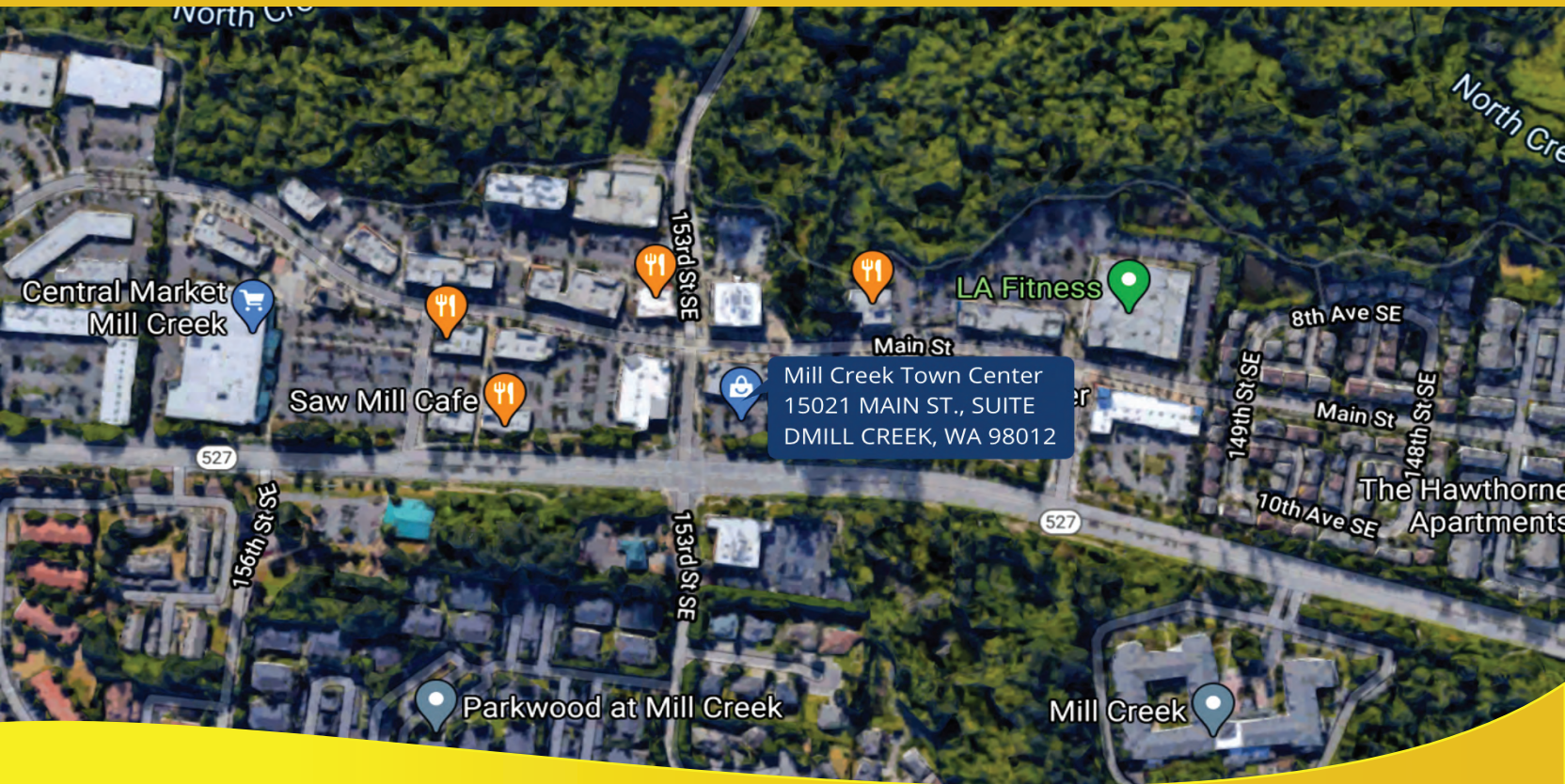
425-503-1678
Shivani@Key-CC.com
License Number 138760

FOR LEASE

Retail \$28.00 PSF + NNN | 1,543 SF (Suite D) Available

Mill Creek Town Center

15021 MAIN ST., SUITE D | MILL CREEK, WA 98012



The 19,139 SF Clock Tower Building is located in Snohomish County, at the north end of the Mill Creek Town Center. Suite D has been an Edible Arrangements location for the past ten years. The suite features a street-side entrance with a walk-up counter

The building is locally owned, and is managed by Key Choice Commercial Real Estate.

Tours can be scheduled with the broker.

Join These Tenants

- HomeStreet Bank
- Airrosti Rehab Center
- Barre 3
- First Financial NW Bank
- Dream Dinners
- Nail Masters
- Thai Rhapsody
- Sugared Beauty Lounge & Academy



Firm License #7894

Rodney Talley, Jr.
Sales & Leasing Broker
425-345-4431
Rodney@Key-CC.com
License Number 111936

Natalie Foskey, CPM, CCIM
Designated Broker
425-343-7176
Natalie@Key-CC.com
License Number 26699

Shivani Sterling
Sales & Leasing Broker
425-503-1678
Shivani@Key-CC.com
License Number 138760

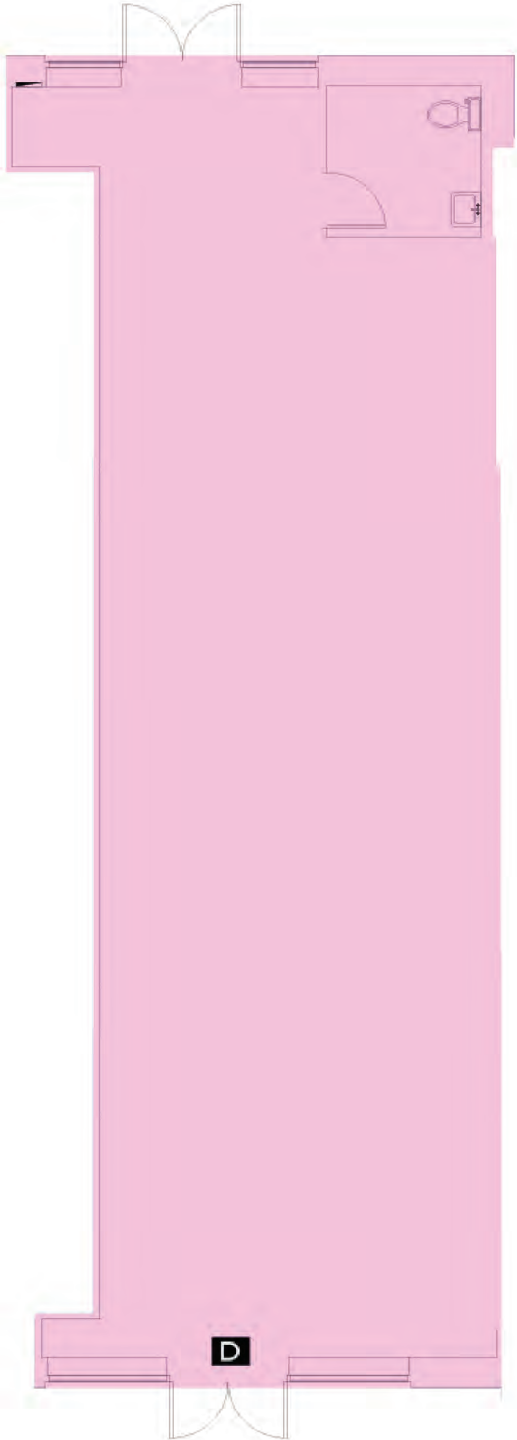
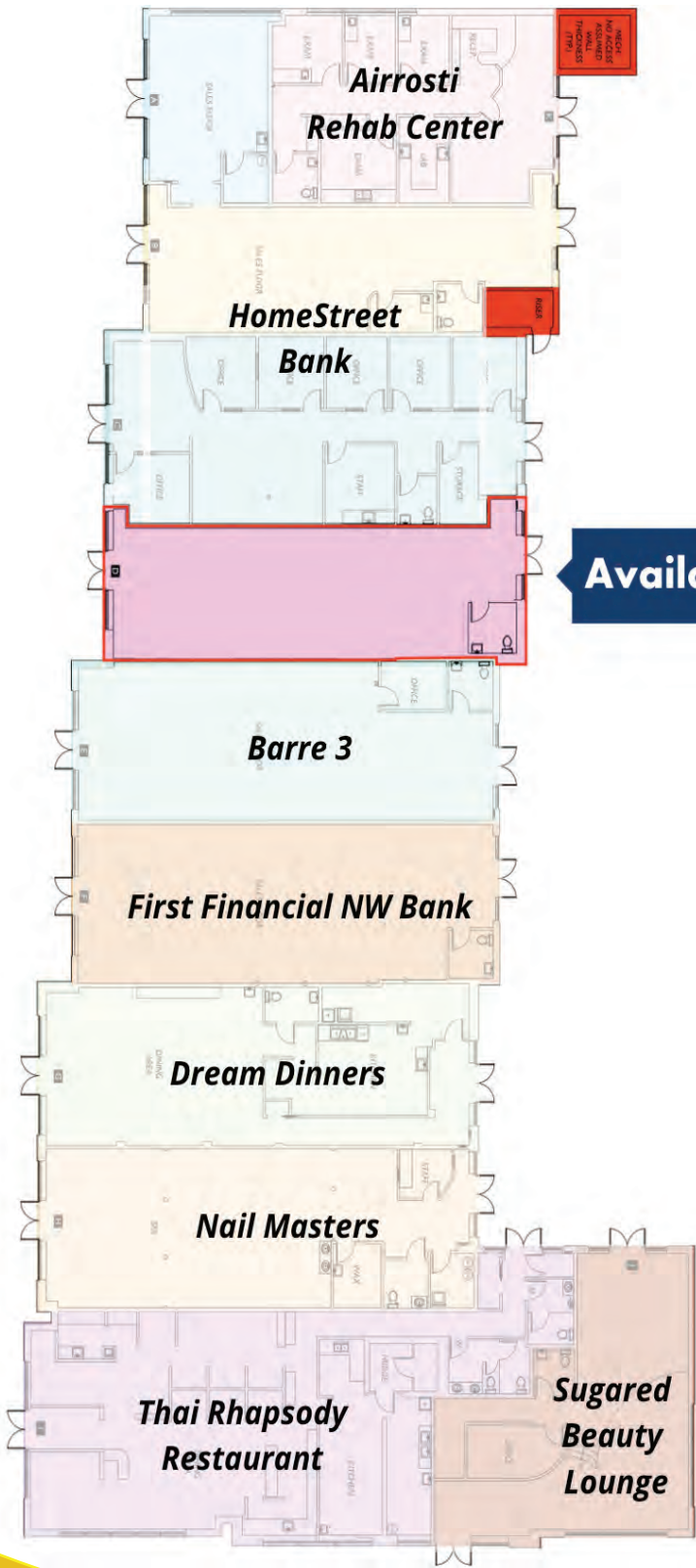
6116 211th St. SW #203 | Lynnwood, WA 98036 | 425-658-3288 | KEYCHOICECOMMERCIAL.COM

FOR LEASE

Retail \$28.00 PSF + NNN | 1,543 SF (Suite D) Available

Mill Creek Town Center

15021 MAIN ST., SUITE D | MILL CREEK, WA 98012



Rodney Talley, Jr.
Sales & Leasing Broker
425-345-4431
Rodney@Key-CC.com
License Number 111936

Natalie Foskey, CPM, CCIM
Designated Broker
425-343-7176
Natalie@Key-CC.com
License Number 26699

Shivani Sterling
Sales & Leasing Broker
425-503-1678
Shivani@Key-CC.com
License Number 138760

Firm License #7894

6116 211th St. SW #203 | Lynnwood, WA 98036 | 425-658-3288 | KEYCHOICECOMMERCIAL.COM

FOR LEASE

Retail \$28.00 PSF + NNN | 1,543 SF (Suite D) Available

Mill Creek Town Center

15021 MAIN ST., SUITE D | MILL CREEK, WA 98012

	2018		
	1 Mile	3 Mile	5 Mile
Population:			
2023 Projection	15,649	164,143	347,212
2018 Estimate	14,422	150,396	318,805
2010 Census	12,835	128,374	276,366
Growth 2018-2023	8.51%	9.14%	8.91%
Growth 2010-2018	12.36%	17.15%	15.36%
2018 Population Hispanic Origin	1,196	17,892	37,371
Households:			
2023 Projection	6,806	61,932	130,270
2018 Estimate	6,281	56,754	119,640
2010 Census	5,637	48,454	103,816
Growth 2018 - 2023	8.36%	9.12%	8.88%
Growth 2010 - 2018	11.42%	17.13%	15.24%
Owner Occupied	3,358	35,196	75,129
Renter Occupied	2,923	21,558	44,511
2018 Avg Household Income	\$106,333	\$99,497	\$100,886
2018 Med Household Income	\$85,445	\$82,376	\$81,933
2018 Households by Household Inc:			
<\$25,000	537	6,008	14,047
\$25,000 - \$50,000	1,082	9,761	20,809
\$50,000 - \$75,000	1,004	9,713	19,738
\$75,000 - \$100,000	1,241	9,808	18,843
\$100,000 - \$125,000	583	7,490	14,977
\$125,000 - \$150,000	608	4,452	9,585
\$150,000 - \$200,000	604	5,106	11,281
\$200,000+	624	4,414	10,360



Firm License #7894

Rodney Talley, Jr.
Sales & Leasing Broker
425-345-4431
Rodney@Key-CC.com
License Number 111936

Natalie Foskey, CPM, CCIM
Designated Broker
425-343-7176
Natalie@Key-CC.com
License Number 26699

Shivani Sterling
Sales & Leasing Broker
425-503-1678
Shivani@Key-CC.com
License Number 138760

6116 211th St. SW #203 | Lynnwood, WA 98036 | 425-658-3288 | KEYCHOICECOMMERCIAL.COM

FOR LEASE

Retail \$28.00 PSF + NNN | 1,543 SF (Suite D) Available

Mill Creek Town Center

15021 MAIN ST., SUITE D | MILL CREEK, WA 98012

Annual Consumer Spending	2018			2023		
Radius	1 Mile	3 Mile	5 Mile	1 Mile	3 Mile	5 Mile
Total Specified Consumer Spending (\$)	188,087	1,703,813	3,634,865	222,143	2,036,774	4,336,638
Apparel:						
Total Apparel	10,291	96,827	205,917	11,804	111,951	237,699
Women's Apparel	4,326	38,807	82,938	4,955	45,222	96,433
Men's Apparel	2,296	21,245	45,368	2,634	24,710	52,609
Girl's Apparel	726	7,544	15,815	846	8,598	18,033
Boy's Apparel	487	5,189	10,819	566	5,895	12,285
Infant Apparel	434	4,379	9,068	492	4,892	10,194
Footwear	2,022	19,662	41,908	2,312	22,633	48,145
Entertainment, Hobbies & Pets:						
Total Entertainment, Hobbies & Pets	15,373	139,792	297,178	17,053	156,348	331,802
Entertainment	3,203	31,788	68,548	3,569	35,672	76,758
Audio & Visual Equipment/Service	6,532	58,037	122,191	7,270	65,119	136,890
Reading Materials	929	7,497	16,042	1,019	8,400	17,961
Pets, Toys, Hobbies	4,709	42,471	90,397	5,195	47,157	100,193
Personal Items	13,687	115,973	249,378	15,762	135,983	291,723
Food & Alcohol:						
Total Food & Alcohol	50,445	461,240	976,464	59,532	549,817	1,161,276
Food at Home	26,125	246,263	522,776	30,984	295,256	624,959
Food Away From Home	20,800	184,983	389,865	24,602	220,602	464,117
Alcoholic Beverages	3,520	29,995	63,823	3,946	33,959	72,200



Firm License #7894

Rodney Talley, Jr.
Sales & Leasing Broker
425-345-4431
Rodney@Key-CC.com
License Number 111936

Natalie Foskey, CPM, CCIM
Designated Broker
425-343-7176
Natalie@Key-CC.com
License Number 26699

Shivani Sterling
Sales & Leasing Broker
425-503-1678
Shivani@Key-CC.com
License Number 138760

6116 211th St. SW #203 | Lynnwood, WA 98036 | 425-658-3288 | KEYCHOICECOMMERCIAL.COM

FOR LEASE

Retail \$28.00 PSF + NNN | 1,543 SF (Suite D) Available

Mill Creek Town Center

15021 MAIN ST., SUITE D | MILL CREEK, WA 98012

Annual Consumer Spending	2018			2023		
Radius	1 Mile	3 Mile	5 Mile	1 Mile	3 Mile	5 Mile
Household:						
Total Household	28,743	251,744	536,632	32,206	285,672	608,882
House Maintenance & Repair	4,183	41,105	88,263	4,669	46,438	99,438
Household Equipment & Furnishings	11,915	104,750	221,124	13,183	117,379	247,756
Household Operations	9,161	78,131	166,787	10,453	90,121	192,738
Housing Costs	3,484	27,758	60,458	3,901	31,733	68,950
Transportation and Maintenance:						
Total Transportation and Maintenance	45,989	437,127	936,391	57,704	552,236	1,180,333
Vehicle Purchases	18,247	183,386	398,113	22,106	222,784	483,251
Vehicle Expenses	1,632	13,384	29,370	1,994	16,621	36,438
Gasoline	14,709	140,637	296,940	20,058	192,973	406,338
Transportation	5,164	43,627	92,621	6,311	54,154	114,762
Automotive Repair & Maintenance	6,237	56,093	119,347	7,234	65,705	139,544
Health Care:						
Total Health Care	9,637	82,768	178,754	11,614	102,112	219,763
Medical Services	5,646	49,125	105,616	6,795	60,150	128,917
Prescription Drugs	3,043	25,555	55,818	3,673	31,922	69,409
Medical Supplies	948	8,088	17,320	1,146	10,039	21,438
Education & Day Care:						
Total Education & Day Care	13,922	118,342	254,152	16,469	142,655	305,160
Education	8,554	73,446	157,779	10,487	92,048	196,661



Key

Choice

COMMERCIAL REAL ESTATE

Firm License #7894

Rodney Talley, Jr.
Sales & Leasing Broker
425-345-4431
Rodney@Key-CC.com
License Number 111936

Natalie Foskey, CPM, CCIM
Designated Broker
425-343-7176
Natalie@Key-CC.com
License Number 26699

Shivani Sterling
Sales & Leasing Broker
425-503-1678
Shivani@Key-CC.com
License Number 138760

FOR LEASE

Retail \$28.00 PSF + NNN | 1,543 SF (Suite D) Available

Mill Creek Town Center

15021 MAIN ST., SUITE D | MILL CREEK, WA 98012



Year Built	2006
Parcel Number	27050600203000
Approximate NNN Rate	\$10.82
County	Snohomish County

Disclaimer: The information contained in this document has been obtained from sources believed to be reliable. While Bradley Commercial Real Estate LLC (BCRE LLC) does not doubt its accuracy, BCRE LLC has not verified and will not verify any of the information contained herein and makes no guarantee, warranty or representations to its accuracy. It is your responsibility to independently confirm its accuracy and completeness. Any projections, opinions, assumptions or estimates used are for example only and do not represent the current or future performance of the property. The value of this transaction to you depends on tax and other factors which should be evaluated by your tax, financial, and legal advisors. You and your advisors should conduct a careful, independent investigation of the property to determine to your satisfaction the suitability of the property for your needs. Properties are subject to change in price and/or availability without notice.



Key
Choice

COMMERCIAL REAL ESTATE

Firm License #7894

Rodney Talley, Jr.
Sales & Leasing Broker
425-345-4431
Rodney@Key-CC.com
License Number 111936

6116 211th St. SW #203 | Lynnwood, WA 98036 | 425-658-3288 | KEYCHOICECOMMERCIAL.COM

Natalie Foskey, CPM, CCIM
Designated Broker
425-343-7176
Natalie@Key-CC.com
License Number 26699

Shivani Sterling
Sales & Leasing Broker
425-503-1678
Shivani@Key-CC.com
License Number 138760