

For Lease

Mill Creek Town Center

Retail \$31 PSF + NNN
1,912 SF (Suite G) available



15021 MAIN ST., SUITE G, MILL CREEK, WA 98012

Property Assets

- ✓ On the corner of 151st and Bothell-Everett Hwy
- ✓ Traffic Count 29,137 (source esri)
- ✓ Across Main Street from LA Fitness
- ✓ 2023 NNN Budget \$9.92
- ✓ Storefront Parking



Natalie Foskey, CPM, CCIM
Designated Broker

425-343-7176
Natalie@Key-CC.com
License Number 26699

Shivani Sterling
Sales & Leasing Broker

425-503-1678
Shivani@Key-CC.com
License Number 138760

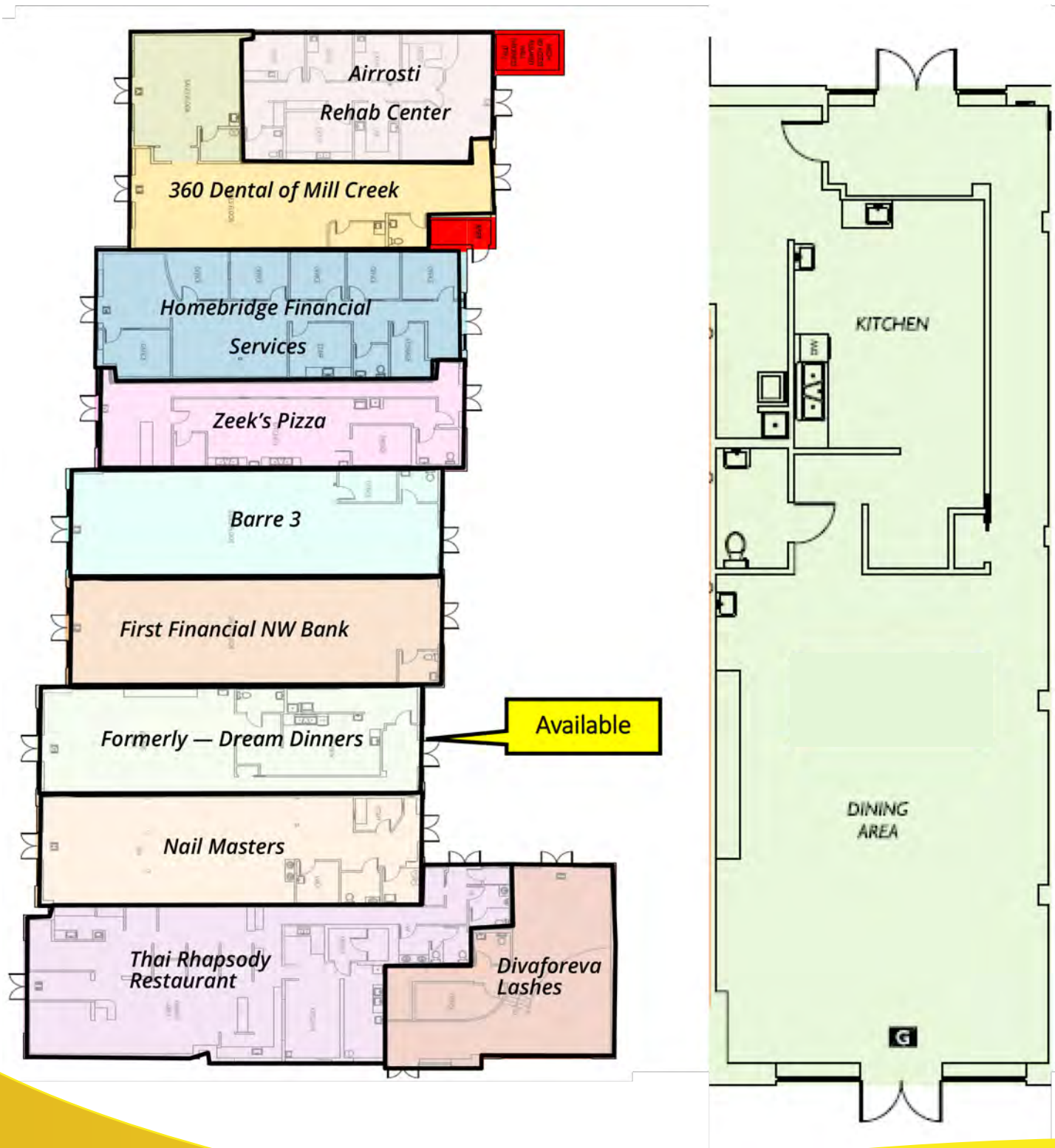
FOR LEASE

Retail \$31 PSF + NNN

1,912 SF (Suite G) available

Mill Creek Town Center

15021 Main St. | Mill Creek, WA 98012



**Key
Choice**
COMMERCIAL REAL ESTATE

Natalie Foskey, CPM, CCIM
Designated Broker

425-343-7176

Natalie@Key-CC.com

License Number 26699

Shivani Sterling
Sales & Leasing Broker
425-503-1678

Shivani@Key-CC.com

License Number 138760

FOR LEASE

Retail \$31 PSF + NNN

1,912 SF (Suite G) available

Mill Creek Town Center

15021 Main St. | Mill Creek, WA 98012



The 19,139SF Clock Tower Building is located in Snohomish County, at the north end of the Mill Creek Town Center. Take advantage of this rare opportunity to locate your business in the Mill Creek Town Center. Suite G is currently available which has a street-side entrance. Access off of main street and parking lot.

The building is locally owned and is managed by Key Choice Commercial Real Estate.
Call broker for more information.

Join These Tenants

- Airrosti Rehab Center
- 360 Dental of Mill Creek
- Homebridge Financial Services
- Zeek's Pizza
- Barre 3
- First Financial NW Bank
- Nail Masters
- Thai Rhapsody
- Divaforeva Lashes



Natalie Foskey, CPM, CCIM
Designated Broker
425-343-7176
Natalie@Key-CC.com
License Number 26699

Shivani Sterling
Sales & Leasing Broker
425-503-1678
Shivani@Key-CC.com
License Number 138760

FOR LEASE

Retail \$31 PSF + NNN
1,912 SF (Suite G) available

Mill Creek Town Center

15021 Main St. | Mill Creek, WA 98012



Year Built	2006
Parcel Nuber	27050600203000
Approximate NNN Rate	\$9.92 PSF
County	Snohomish County

The information contained in this document has been obtained from sources believed to be reliable. While Key Choice Commercial Real Estate (KCC LLC) does not doubt it's accuracy, KCC LLC had not verified and will not verify any of the information contain herein and makes no guarantee, warranty or representations to it's accuracy. It is your responsibility to independently confirm its accuracy and completeness. Any projects, opinions, assumptions, or estimates used are here for example only, and do not represent the current or future performance of the property. The value of this transaction to you depends on tax and other factors which should be evaluated by your tax financial and legal advisors. You and your advisors should conduct a careful independent investigation of the property to determine to your satisfaction the suitability of the property for your needs. Properties are subject to change in price andor availability without notice.



Natalie Foskey, CPM, CCIM
Designated Broker
425-343-7176
Natalie@Key-CC.com
License Number 26699

Shivani Sterling
Sales & Leasing Broker
425-503-1678
Shivani@Key-CC.com
License Number 138760